

# Manufacturer Product Warranty

## Ergonomic Anti-Fatigue and Safety Matting



All Notrax® floor matting is manufactured of the highest quality material and workmanship. Superior Manufacturing Group Europe B.V. warrants that all Notrax® products will be supplied free from defects in material and manufacture. In the unlikely event of a Notrax® product being faulty, a full refund or replacement will be made based on manufacturer's discretion. In other words, if there is a defect, we will replace the mat. Dependability and service of our products are

guaranteed for one year from date of purchase under normal conditions of use. Buyer has the responsibility to determine the suitability of the product and assumes any liability in connection with such use. Seller shall not be liable for damages in excess of purchase price of product. Warranty does not apply to added bevelled nosing, splicing or seaming of mats.

### Industrial Mat Care Tips

Why regular cleaning is important . . .

- To prolong the life of industrial mats by preventing dirt build-up over long periods of time
- To maintain the mat's specialized properties such as anti-slip or static dissipative properties
- To improve the overall appearance of the mats

Moulded rubber mats

Use a high-pressure hose (124 bar max.) with hot water (no greater than 70°C max.), especially efficient to remove oils from the mat.

The use of a mild soap, mild detergent OR non-butyl degreaser is suggested for a better result. Do not clean gritted mats with high pressure.



Moulded PVC mats

Use a high-pressure hose (124 bar max.) with hot water (no greater than 70°C max.), especially efficient to remove oils from the mat. The use of a mild soap, mild detergent OR non-butyl degreaser is suggested for a better result. Do not clean gritted mats with high pressure.

Vinyl sponge matting

Sweep regularly or dry mop the surface and the back of the mat. The surface can be damp-mopped with a mild soap/detergent.

Runners

Sweep with a broom or vacuum the surface. The usage of wet mop with mild soap or detergent is possible.

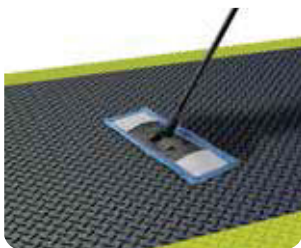
ESD Mats

To sweep or dry mop the surface on a regular basis is important to maintain the static dissipative properties of the mat. A static control cleaning solution is advised but also a wet mop with mild soap that will not leave any residue can be used.

Caution:

- DO NOT use BLEACH or any BUTYL-BASED DEGREASER regardless of where the mat is used.
- Exposing the mat to any other chemicals may adversely affect the service of this product. Consult the Notrax® Chemical Resistance list for more information about resistance to chemicals.
- Improper cleaning, handling, folding, or use of commercial dishwasher for cleaning mats will shorten expected useful life of the mat.

#### Mats for dry areas

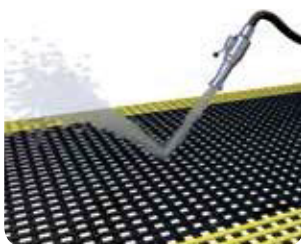


Sweep top surface daily



Damp-mop top surface periodically

#### Mats for wet or oily areas



Water jet with soap daily

#### Mats for kitchen or hygienic areas



Water jet with soap daily