

Notrax® Swisslon Plus™

Main functions:

- Absorbing and scraping entrance mat

Notrax® Premium quality barrier carpeting for heavy traffic conditions, designed to remove walked-in moisture and finer dirt particles in large indoor entrance areas including wall-to-wall applications and even stairs.

- Maintains its great looking appearance for the longest time
- Dense heavyweight vinyl backing ensures longevity and minimum shifting
- Fire retardant
- For large entrances at hotels, public buildings, schools, universities, hospitals, department stores, banks & restaurants

Recommended Uses:

- Heavy Duty

Available Sizes

- 130 cm x custom length in cm
- 200 cm x custom length in cm

Technical Specifications

- Densely tufted cut loop pile (73,340 tufts per m²) consisting of 100% polyamide 6.6 yarns
- 900 grams of yarn per m²
- Backing: black vinyl (DOP free)
- Overall thickness: 8.5 mm
- Weight: 3,5 kg per m²

Product Testing

- Fire Retardancy:
- Colour Fastness to Light:
- Water Retention:

ISO EN 9239

AATCC 16E

U.S.

Bfl-S1

5

5.5 l/m²

• Available Colours:



Twine Blue



Wave Blue



Twine Grey



Wave Grey



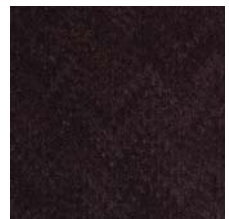
Twine Taupe



Wave Taupe



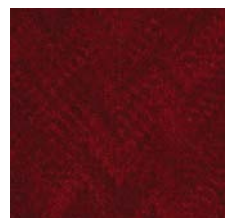
Twine Charcoal



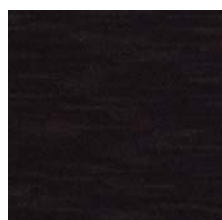
Wave Charcoal



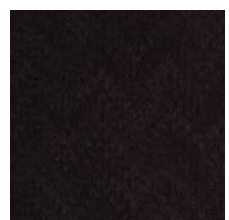
Twine Red



Wave Red



Twine Black



Wave Black

